



P.O.Box 5399  
Phoenix, AZ 85072

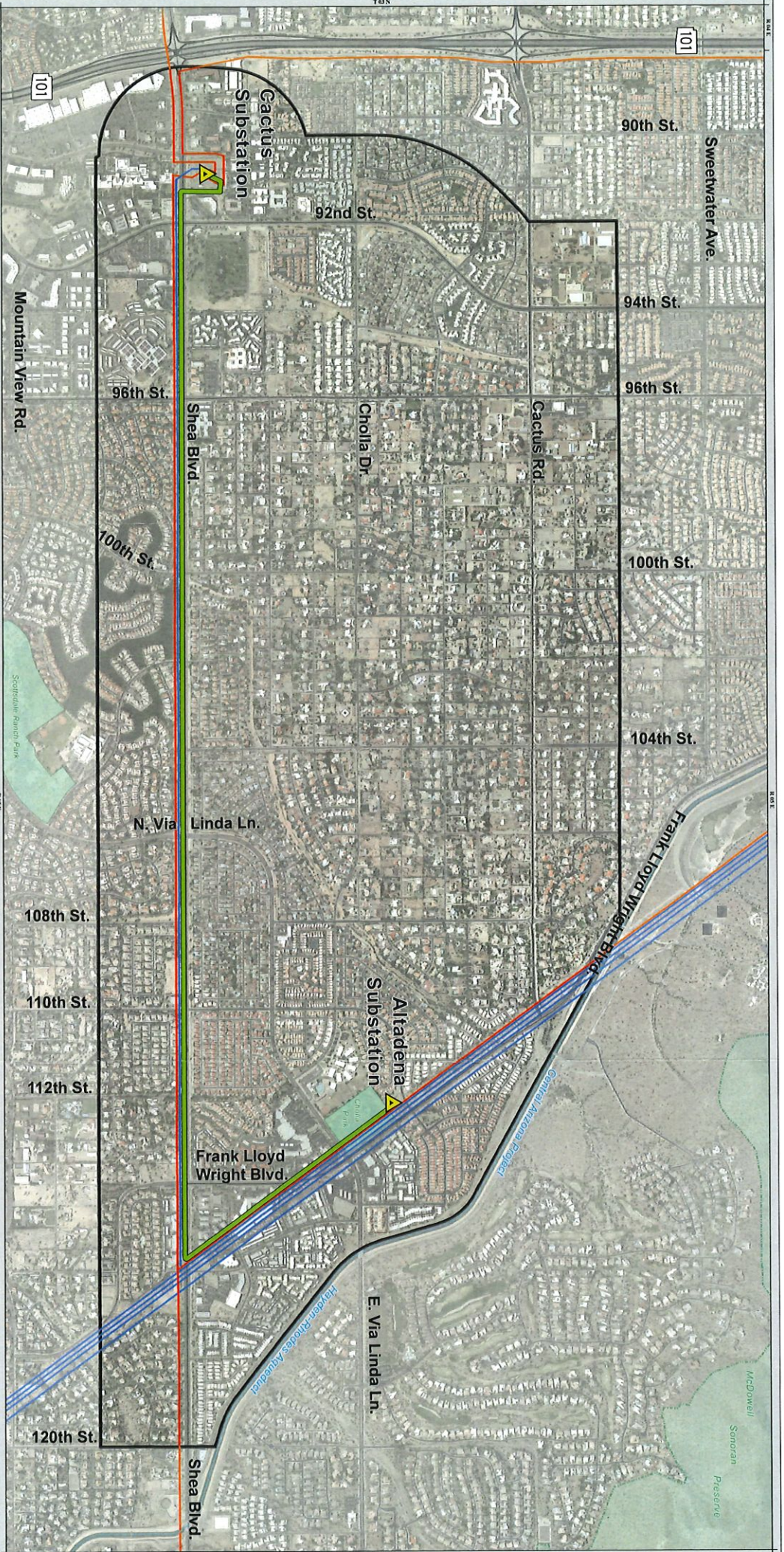
October 2, 2018

Dear APS customer, property owner and/or community leader,

In an effort to provide safe, reliable electric service to our customers, APS invests approximately one billion dollars annually in our energy infrastructure. Because you live, work and/or own property in the area, we want to keep you informed about our upcoming construction along Shea Boulevard.

**The Altadena to Cactus 69,000 volt (69 kV) power line construction project is vital to ensuring reliable electric service for Scottsdale.** The main aspects of the project are summarized below:

1. *Work Schedule:* Work along Shea Blvd will take place Sunday evenings through Friday mornings, from October 21 – December 14, 2018. Lane restrictions along Shea Boulevard are necessary to accommodate the large equipment required to complete this project.
  - a. In most cases, the lane restrictions will include the two east bound lanes from 92<sup>nd</sup> St to 118<sup>th</sup> St in half-mile increments. While working on the north side of Honor Health Scottsdale-Shea Hospital, we will only restrict the southern-most east bound lane from 90<sup>th</sup> St to 92<sup>nd</sup> St.
  - b. Depending on the area of the work, most of the lane restrictions will start no early than 7 p.m.; all lanes will be reopened and barricades will be removed by 5 a.m. the next morning.
  - c. We will always make every effort to avoid scheduling any work on major holidays or when there are major events in the area.
2. *Location:* This project connects the Altadena Substation (located north of Cholla Park at the southwest corner of E. Altadena Ave. and Frank Lloyd Wright Blvd.) to the Cactus Substation (northeast corner of 90<sup>th</sup> St & Shea Blvd.).
  - a. The route for this line was selected after an 18-month public siting process that evaluated land availability and environmental, engineering, regulatory and cost impacts. Public outreach was an important part of the process and included two informational open houses.
  - b. The final route was communicated to the public in April 2016. More project information is available at [www.aps.com/siting](http://www.aps.com/siting) (click on "Completed Siting Projects" > "Sub-Transmission (69 kV)" for this project).
3. *Scope:* The selected route places new 69kV conductors on the existing 230,000 volt (230 kV) poles on the south side of Shea Blvd. between 90<sup>th</sup> St. and the existing utility corridor at approximately 116<sup>th</sup> St.
  - a. Just east of 90<sup>th</sup> St., these wires cross north of Shea Blvd. and enter the Cactus Substation.



# Altadena to Cactus 69-kV Powerline Project

Selected Route



**Project Features**  
 Study Area  
 Selected Route

**Existing Transmission Facilities**  
 Substation  
 230-kV Transmission Line  
 69-kV Transmission Line

**Reference Features**  
 Highway  
 Major Road  
 Arterial Road  
 Canals  
 Parks  
 Preserve Boundary

**Sources**  
 Maricopa County 2011  
 ESRI Street Map 2015  
 EPS LLC 2015

March 2016



101, 90th St, Sweetwater Ave, 94th St, 96th St, 100th St, 104th St, Frank Lloyd Wright Blvd, 108th St, 110th St, 112th St, 120th St, Shea Blvd, E. Via Linda Ln, Altadena Substation, Cactus Substation, Cholla Dr, N. Via Linda Ln, Linda Ln, 92nd St, 96th St, 100th St, Mountain View Rd, Scottsdale Ranch Park, McDowell Sonoran Preserve, Gantner Arroyo Arroyo, Hayden-Rhodes Arroyo